

'Bike Feeling' at the foot of the Eiger North Wall

Top departure point for over 30 bike tours (600 km)
in the 'Grindelwald Bike Arena' and the whole Jungfrau Region.

Ready – Steady – Pedal!



The *particularly sunny and peaceful location* at Kirchbühl is an *ideal departure point* for all bike tours.

Explore the *surrounding mountain and glacier world of the UNESCO World Heritage* by mountain bike during the day and enjoy our *choice cuisine* during the evening. Escape the hustle and bustle of the village centre and relax on our *sunny terrace with its charming garden*. The *First and Pfingstegg aerial cableways* are nearby and our *hotel shuttle bus* is an easy way to travel *to and from the village centre* during the day.

Biking Highlights at Kirchbühl

🌟🌟🌟🌟 Your host Christian Brawand knows our region and mountains very well - the perfect person to give our biking guests expert help and advice.

🌟🌟🌟🌟 Daily power package as well as free laundry service for biking gear, bike washing area, bike room, bike tools with servicing stands and après-biking snack (cake buffet)

🌟🌟🌟🌟 Route suggestions and maps

🌟🌟🌟🌟 Organized bike tours with qualified guides from Privat-Bike, Grindelwald, every Tuesday, Friday and Sunday. Easy to medium levels.

BIKE & GOURMET

After an unforgettable bike day:

treat yourself to select specialities in the La Marmite Gourmet Restaurant, or traditional Swiss dishes in the rustic Hilty-Stübli and Eiger-Stube.

Enjoy warm hospitality and high-class cuisine served with direct views of the Eiger North Wall.

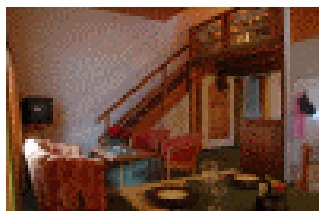


After an unforgettable bike day: rest and relax in one of our comfortable rooms or apartments...

We offer rooms in various categories from standard to deluxe-junior suite, as well as family apartments



BIKE & FAMILY



Our holiday apartments are located in various chalets around the hotel and are ideally suited to families.

We offer apartments for 2 – 6 persons.

During the summer months we have a special programme for younger mountain-bike fans.

After an unforgettable bike day: soothe body and soul in the whirlpool and tank up on pedal power...



Our small but superb wellness oasis with sauna, steam bath and hot whirlpool. Massages available on request.



The first destination in Switzerland to join

Reservations and information on our special bike packages:

Hotel & Appartements Kirchbühl
Familie Christian Brawand
Postfach 44
3818 Grindelwald
Tel. +41 (0)33 854 40 80 Fax +41 (0)33 854 40 81
e-mail hotel@kirchbuehl.ch / www.kirchbuehl.ch

★★★★
Hotel • Restaurant • Appartements
KIRCHBÜHL
Grindelwald